

CELEBRATING OUR

1939

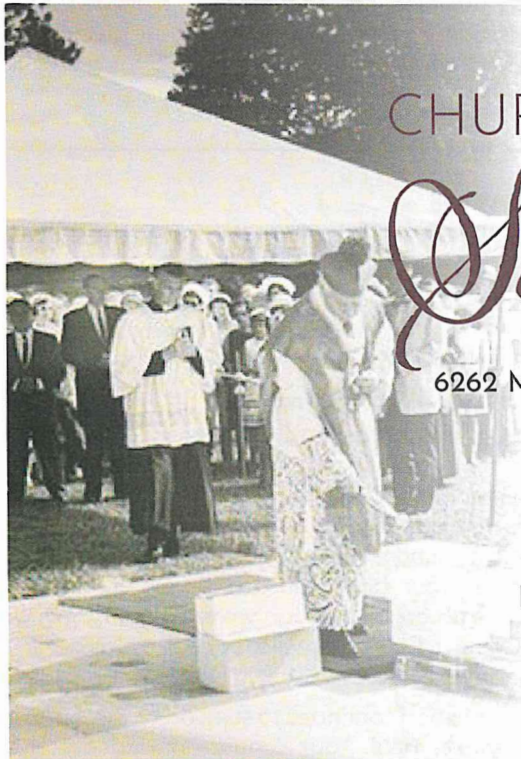


85<sup>th</sup>



ANNIVERSARY

2024



CHURCH OF

*St. Therese*

6262 Main Street, Gloucester, Virginia 23061

Parish Office: 804-693-5939

E-Mail: [office.1@stthersglo.org](mailto:office.1@stthersglo.org)

Web Page: [www.stthersglo.org](http://www.stthersglo.org)

Pastor, Rev. Gregory Kandt

Deacon, Rev. Mr. José Melendez

Business Manager

Debbie Knarr

Administrative Assistant

Denise Canada

Pastoral Minister

Kerry Fallon

Coordinator of

Religious Education

Nadine McGrady

Coordinator of Youth Ministry

Linda Gregory

Facilities &

Maintenance Coordinator

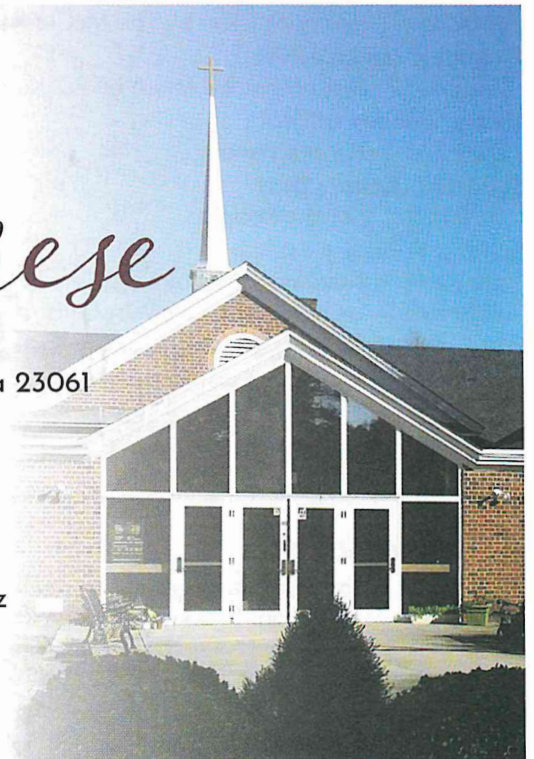
Gary Dietz

Custodian

Rosa Rodriguez

Coordinator of Music Ministry

Beverly Sabourin



**Weekend Mass Schedule**

Saturday - 5:00 p.m.

Sunday - 8:00 and 10:30 a.m.

**Daily Mass Schedule**

Listed inside bulletin  
each week

**Sacrament of Reconciliation**

Third Wednesday of the  
month at 6:15 p.m. or by  
appointment



**Office Hours**

Monday-Thursday -

9:00 a.m.-2:00 p.m.

Friday - 9:00 a.m.-1:00 p.m.

The parish community of  
St. Therese welcomes you.

Please see an usher or  
contact the  
Parish Office for a  
registration form.





# JANUARY 25, 2026

## MASSSES AND INTENTIONS

### Saturday, January 24th

5:00 p.m. For the People

### Sunday, January 25th

8:00 a.m. Dan Harding by Debbie & Bill Kelly

10:30 a.m. Carlos Gonzalez by the Gonzales Family

### Monday, January 26th

No Mass

### Tuesday, January 27th

12:00 p.m. No Mass

### Wednesday, January 28th

8:00 a.m. James Stacklin by The McCloskey Family

### Thursday, January 29th

12:00 p.m. Bishop Patrick Ahern by Pat Kurovics

### Friday, January 30th

12:00 p.m. Jeffrey Foster by Ann & Mike Foster

### Saturday, January 31st

5:00 p.m. For the People

### Sunday, February 1st

8:00 a.m. Delores Aliquo by Leisa Strosnider

10:30 a.m. George Ronan by Mary Sinisi

Sacrament Chapel vase flowers are a perpetual living memorial for Anna Lupei.

Tabernacle Candle shines in loving memory of Carl Snyder.

## ADULT SUNDAY SCHOOL

Solitude is one of the great values of our spiritual prayer tradition as Christians. Join us on Sunday, January 25, between the morning Masses (starting promptly at 9:15 a.m.) and let's talk about Solitude. Taught by Fr. Gregory. This will take place in the Meeting Room.

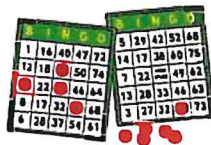
All are welcome, Catholic or not!

## MORNING BIBLE STUDY

Are you considering the common practice of giving up something for Lent? This year, instead of giving up something, you may want to do something extra. Joining the Morning Bible Study group could be just the thing! Beginning on Thursday, February 19th, which is the day after Ash Wednesday, the group will begin using a special seven-session booklet, *"With Jesus to the Cross – Year A: Lenten Guide on the Sunday Mass Readings."* Each week, the readings for the upcoming Sunday will be discussed. The group meets in the Meeting Room from 10:15-11:45 a.m. each Thursday. To sign up or get more information, please call Sid Dugas at 804-815-6288 or email at [spdugas@cox.net](mailto:spdugas@cox.net) or Kim Green at 804-824-1073 or email at [kwg853@yahoo.com](mailto:kwg853@yahoo.com).

## BINGO

Bingo is played on Tuesday nights. Doors open at 5:30 p.m. and Bingo starts at 7:00 p.m. Bingo could use some help working in the kitchen and selling pull tabs. Many of our staff are out with surgeries. Any additional help you can provide would be so appreciated.



## GUEST SHELTER NEEDED SUPPLIES

Ear plugs (for those sensitive to snoring or other nighttime noises), Febreze, Lysol wipes, disinfectant spray, men's undershirts (sizes Large-2XL), men's long-sleeve shirts (sizes Large-2XL), men's lounge pants (sizes Large-2XL), and men's underwear (sizes Large & XL). You can drop your donations off at the Day Shelter, 6536 Moose Drive, Gloucester, Monday-Friday from 7:00 a.m.-6:00 p.m.

## JUBILEE CHURCHES NEWS

Thanks to the generosity of Jubilee Churches, we were able to assist a 70-year-old woman in our community who was at risk of losing power in her home. After an unexpected hospital stay and ongoing medication costs, she fell behind on her electric bill. Living with COPD, uninterrupted electricity is essential to her health and safety.

Jubilee Churches' support helped prevent a power shutoff, allowing her to remain safely in her home and focus on her health instead of crisis. This assistance provided not only financial relief, but peace of mind and hope during a vulnerable season. Your giving keeps neighbors safe, housed, and cared for – thank you for being part of that impact.

## HAITI MISSION UPDATE

**News from Fr. Richardson in Haiti:** "As for me in Haiti, I can honestly say things are not going well at all. There is rampant insecurity, pressure from teachers regarding their debts, and the cyclone that struck Roy-Sec two weeks ago." **We pray that life in Haiti becomes easier for all the people living there!**

### St. Therese Haitian Twinning Program

Sales of inscribed bricks continue and make great gifts. Watch for the inscribed brick placement in the portico coming soon, weather pending! (Thank you to Donna and the Bingo committee for assisting in the brick portico project.) The engraved brick program is an ongoing fundraiser that helps support our Haiti mission. Please order your bricks or donate on the church website; [www.stthersglo.org](http://www.stthersglo.org) or through [www.polarengraving.com/stthersglo](http://www.polarengraving.com/stthersglo). Contact Charlie Patullo at [cpatullo57@gmail.com](mailto:cpatullo57@gmail.com) for more information.

The St. Therese Haiti Mission continues to support Fr. Richardson in his efforts in Roy-Sec, Haiti. Your continuing kindness and financial generosity also continues to support the St. Joseph's Elementary School in Haiti.

## GRIEF SHARE – Grieving the Loss of a Loved One

A Grief Share support group is a safe, welcoming place where people understand the difficult emotions of grief. Through this 13-week group, you'll discover what to expect in the days ahead and what's "normal" in grief. Since there are no neat, orderly stages of grief, you'll learn helpful ways of coping with grief, in all its unpredictability – and gain solid support each step of the way.

The session of Grief Share began here at St. Therese January 18. The sessions are held in the Meeting Room which is down the Education Wing. We meet from 2:00-4:00 p.m. every Sunday. Registration is recommended to ensure there are enough materials for everyone. There is no cost to these sessions. To register for an In-Person group, go to [griefshare.org](http://griefshare.org) and Find a Grief Share support group by typing in the ZIP code 23061.

For more information, contact Linda Gregory at 804-815-7695 or send a message through Grief Share.



**DONATION KIOSK UPDATE**

At this time, the Square system can only handle deposits to one bank account, which is the General Operating Fund. It is not possible to process MMR/Haiti/Building Fund/Capital Improvements.

We apologize for the inconvenience and appreciate your understanding. I'm glad to help with any questions, so please reach out to Deb Knarr, Business Manager at 804-693-5939 or [b.manager@stthersglo.org](mailto:b.manager@stthersglo.org).

**CHILI COOK-OFF!**

Bring your best chili and your appetite! Join us today, January 25th at noon in the Social Hall for a chili cook-off filled with great food and community fun. Everyone is welcome—come cook, taste, or just enjoy! All chili types welcome.

Until March 20th, 2026, **Bread for Life Community Food Pantry** will be hosting a Sacred Soups Winter Food Drive. Please bring all donations (or to schedule a pick-



up of large donations, e-mail [bflpantry@gmail.com](mailto:bflpantry@gmail.com) to the Donation Bin located around the back of our building, 7840 John Clayton Memorial Highway. The individual, business, organization, or church that donates the most, easy pop-top-open soups will win a lunch for up to 10 people!

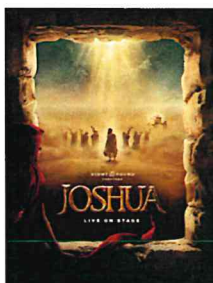
**KNIGHTS OF COLUMBUS**

Knights of Columbus Council gathers on the First and Third Thursdays of the month. Rosary is at 7:00 p.m. and a meeting is to follow.

**LANCASTER, PA TRIP**

The bus is filling up!

The trip to the Sight and Sound Theater to see "Joshua" will be April 13-15. See the posters in the Commons and bulletin board for details. Contact Teresa Hinton at 804-824-5735 or email [teres2hinton@gmail.com](mailto:teres2hinton@gmail.com) to inquire regarding available space.

**FOR YOUR CONVENIENCE**

We have relocated the black lock box in the Commons to outside of the glass windows at the Parish Offices. You may use this box to drop off offertory envelopes and any other information or correspondence for us in a secure manner. Thank you and we hope this helps when the offices are closed!

**YOUTH MINISTRY JANUARY CALENDAR**

January 25 – Class, 12:00-1:30 p.m.

January 28 – H.S. Confirmation Class, 6:00-8:00 p.m., YLC

**TRUE LIFE IN GOD PRAYER GROUP**

Please join us for Bible readings, saying the Rosary, meditation, and sharing. Our main purpose is to pray for Christian Unity as our Holy Father Pope Francis had asked of us. Point of Contact is Trudy Vanderhoof. You may reach her at [btcentauri@aol.com](mailto:btcentauri@aol.com). We meet the 1st Tuesday of the month at 10:00 a.m. at the Church in the library.

**THRESHOLD BIBLE STUDY**

Thursday afternoon Bible Study at Jim Lee's home resumed January 8th with a new book. Sessions are 3:00-4:00 p.m. For information, contact Jim at 804-693-0826.

**GIVE THE GIFT OF LOVE**

Prayer shawls are available to gift for the holidays, holy days, birthdays and more, and are **free!**

Slippers, hats and scarves are now available! Each is crafted with the prayer that the recipient knows they are loved not only by the giver but by our Lord, Jesus Christ.

Contact Nadine McGrady at [N.McGrady@StThersGlo.org](mailto:N.McGrady@StThersGlo.org) or 804-693-5939, ext. 3 for special orders or for more information.

CHECK OUT THIS LINK:

**CATHOLICS COME HOME | YOU'RE NOT ALONE**

[www.catholicscomehome.org](http://www.catholicscomehome.org)

**NEW TO ST. THERESE?**

We would love to hear from you!

Please register with us, especially if you or a family member anticipate receiving any sacraments in the future. Forms are located in the Commons next to the office entrance or fillable forms may be emailed upon request. Thank you and welcome!

**CURRENT PARISHIONERS**

Please check with Denise and ensure your address, phone number and contact information is up-to-date in the office records.

**OUR MOST SACRED TREASURE****FOR THE WEEKEND OF JANUARY 11, 2026**

|  |               |
|--|---------------|
| Annual Operating Budget Fiscal Year 25/26: | \$757,901.00  |
| Amount needed per week to maintain budget: | \$ 14,575.02  |
| Actual Plate Contributions:                | \$ 5,103.00   |
| E-giving:                                  | \$ 2,848.50   |
| Other Contributions:                       | \$ 1,856.00   |
| Weekly Grand Total:                        | \$ 9,807.50   |
| Total Weekend Mass Counts:                 | 5:00 p.m. 117 |
|  | 8:00 a.m. 104 |

**2nd Collection Schedule:**

February 1st – MMR

**OFFERTORY ENVELOPE UPDATE**

Your 2026 offertory envelopes are available in the Social Hall. Thank you very much for your patience as we updated and processed the new 2026 boxed sets. They will be available for you until February 1, 2026.

Please reach out to Deb in the office if you have any questions or need your set after February 1 at 804-693-5939. And you can always sign up for e-giving through Vanco by scanning this code or visiting [www.vancopayments.com](http://www.vancopayments.com). Thank you!



**Church of St. Therese**  
**Statement of Operating Income**  
For the (3) months of the current fiscal year beginning July 2025 and ending June 2026

|  | Budget<br>Fiscal year<br>July 2025/June 2026 | Actuals<br>Fiscal year<br>Sept 2025 |
|--|--|-------------------------------------|
| <b>Church Operating Receipts:</b>                                  |  |                                     |
| Regular offertory/loose/envelope/giving                            | \$505,000.00                                 | \$138,932.31                        |
| Cath Va/Stole Fees/Dividends/Interest/Rel Goods                    | \$2,500.00                                   | \$1,023.60                          |
| Votive offerings   | \$2,000.00                                   | \$491.00                            |
| Bequests/Legacies/General holiday donations/misc/xfr               | \$24,000.00                                  | \$53,233.73                         |
| Fundraising/Bingo/Hall Rental                                      | \$105,042.00                                 | \$5,464.90                          |
| Designated donations: mmr/bldg/cap imp/fuel/columbarium            | \$51,500.00                                  | \$37,182.17                         |
| Liturgical/Ministry donations                                      | \$31,359.00                                  | \$235.00                            |
| Faith Formation tuition  | \$4,000.00                                   | \$8,058.29                          |
| Charity/Social Ministry/Haiti                                      | \$16,000.00                                  | \$1,084.22                          |
| Diocesan Grants  | \$4,500.00                                   | \$0.00                              |
| Non-Diocesan Grants  |  | \$0.00                              |
| Annual Appeal  | \$12,000.00                                  | -\$20.00                            |
| Miscellaneous  |  | \$0.00                              |
| <b>Total operating receipts</b>                                    | <b>\$757,901.00</b>                          | <b>\$245,685.22</b>                 |
| <b>Church Operating Expenses:</b>                                  |  |                                     |
| <b>Ministry Expenses:</b>  |  |                                     |
| Worship:music/liturgy/flowers/hosts/altar candles, etc.            | \$15,700.00                                  | \$3,391.84                          |
| Hospitality/Ministry/Parish Community Life/Bereavement             | \$10,300.00                                  | \$674.34                            |
| Social Ministry/Haiti  | \$18,500.00                                  | \$947.00                            |
| <b>Faith Formation Expenses:</b>                                   |  |                                     |
| Children's Faith Formation   | \$9,040.00                                   | \$2,369.00                          |
| Youth Ministry   | \$6,600.00                                   | \$1,067.34                          |
| OCIA/AE  | \$2,000.00                                   | \$779.09                            |
| Min Gen/Evangelization   | \$7,790.00                                   | \$1,952.94                          |
| <b>Total ministry expenses</b>                                     | <b>\$69,930.00</b>                           | <b>\$11,181.55</b>                  |
| <b>Diocesan Mandates:</b>  |  |                                     |
| Clergy comprehensive package (sal+rect)                            | \$96,107.00                                  | \$23,096.33                         |
| Lay personnel  | \$315,061.00                                 | \$84,965.21                         |
| Deacon Convo, etc  | \$1,500.00                                   | \$752.70                            |
| CDR Mandates:PR fees/screen/software/cath va/schools/cathedraticum | \$112,769.00                                 | \$18,843.54                         |
| <b>Total diocesan mandates</b>                                     | <b>\$525,437.00</b>                          | <b>\$127,657.78</b>                 |
| <b>Overhead:</b>   |  |                                     |
| Utilities  | \$48,000.00                                  | \$28,087.63                         |
| R&M/svc cont/grounds   | \$51,500.00                                  | \$10,972.35                         |
| Capital improvements/Property,Plant&Equip/Depreciation             | \$27,159.00                                  | \$31,133.26                         |
| Janitorial/taxes/insurance   | \$15,375.00                                  | \$4,724.76                          |
| Off exp/furnish/equip/bull/copy/sub/pstg/prof/hosp/fees/books/dev  | \$20,500.00                                  | \$4,067.40                          |
| <b>Total overhead</b>  | <b>\$162,534.00</b>                          | <b>\$78,985.40</b>                  |
| <b>Total operating expenses</b>                                    | <b>\$757,901.00</b>                          | <b>\$217,824.73</b>                 |
| <b>Net income from operations</b>                                  | <b>\$0.00</b>                                | <b>\$27,860.49</b>                  |

**SAINT THERESE FINANCIAL SUMMARY**  
July 2025- June 2026

This memo provides information on the financial position of St. Therese for the first quarter (3 months) of the Fiscal Year. This Statement of Operating Income depicts a net **gain** from operations of **\$27,860.49**. The church has unrealized **gains** from investments and the endowment fund of **\$20,387.02** which cannot be spent without diminishing the principal (selling investments).

We continue to see a rise in online giving platforms with now **38%** of the parish giving **electronically**. Of the 578 registered households at the parish, **410** of them give via some form of registered giving, with **8%** contributing to **loose cash or not contributing**. This information also indicates that the majority of our income is from Regular Contributions and Special Designated Donations. Many thanks also to parishioners who continue to donate to the Endowment Fund. In addition, donations to the endowment are on track to fund the spending plan which allows for the use of interest income above the amount of the spending plan threshold. The generosity of the parish has enabled us to establish this fund which will allow a future income stream for the parish.

Operating expenses this quarter reflect our Diocesan Mandates/Overhead. Utility reductions have helped offset lower overall income. The church staff has always maintained meticulous records and demonstrated exemplary fiduciary responsibility with our donations during these difficult economic times. In accordance with Father Gregory's direction, only necessary expenditures are currently funded.

We appreciate your generosity and ask that you continue to support Saint Therese with your time, talent and treasure. Should you have any questions, please feel free to contact me, Sylvester McClellan, Finance Council Chair at 804-642-6881 or any member of the Finance Council.

Janet Leigh 804-693-4962     Jim Lee 804-693-0826     Janet Brown 757-871-0945     Joe Syslo 804-725-6590

Please consider e-giving online by signing up today at [www.sttherglo.org](http://www.sttherglo.org) or click the square here.





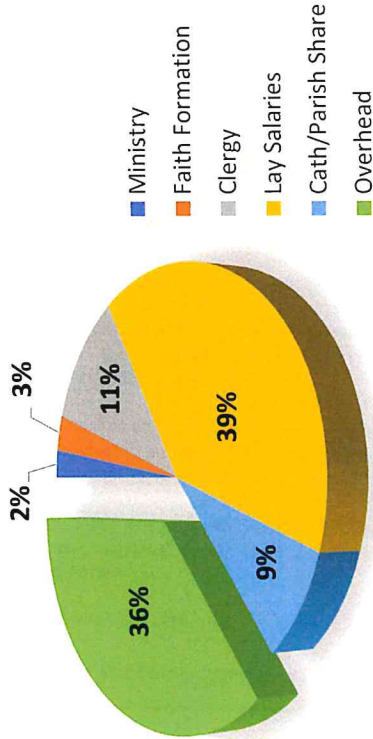
Condensed Operating Synopsis

|                                  |              |
|----------------------------------|--------------|
| Operating Income:                | \$245,685.22 |
| Operating Expenses:              | \$217,824.73 |
| Potential Net Gain               | \$ 27,860.49 |
| Actual Net Gain From Operations: | \$ 27,860.49 |

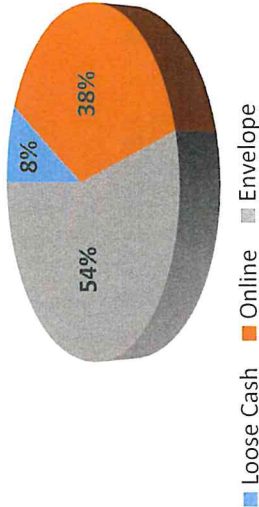
This statement depicts a net gain from operations of \$27,860.49.

The church has unrealized gains from investments and the endowment fund of \$20,387.02.

Church Expenses 2025-2026

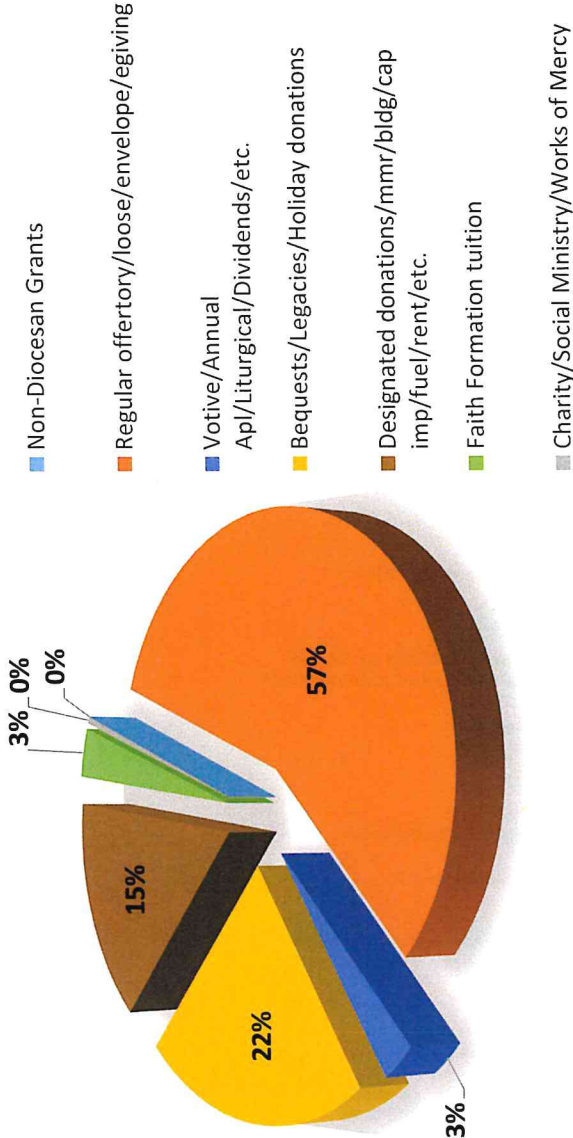


Givers by Type



e-giving square

Church Operating Receipts





**Welcome To**  
**Anna's Pizzeria**  
*Italian Restaurant*  
 Gloucester Exchange Shop Ctr.  
 693-4171 Orders To Go

**FRANKTRONICS, INC.**  
 804-642-5233  
 Computer Repair  
 & Sales  
 Virus Removal  
 Experts  
[www.Franktronics.net](http://www.Franktronics.net)

**The Other Moving Company, Inc.**  
 1-866-4U2-MOVE TOLL FREE

- Packing/unpacking
  - Interstate/international moving
  - Senior relocation services
  - Packing materials
  - Mobile storage units
  - Climate-controlled warehouses (Hayes/Williamsburg), mini storage units (Hayes)
- Family-owned & operated.  
 Visit us at [www.theothermovingcompany.com](http://www.theothermovingcompany.com)

**Hodges & Bryant LLC**  
 Plumbing, Heating, Air Conditioning  
**Danny McCloud**  
 Managing Member  
 6834 Ware House Rd.  
 Gloucester, VA 23061  
 (804) 693-2102  
[danny.hodghry@gmail.com](mailto:danny.hodghry@gmail.com)

**AWARD-WINNING MOVING & STORAGE SOLUTIONS.**  


**Barbaro J. Perez, M.D., FAAOS**  
 Board Certified, Orthopedic Surgery  
 Sports Medicine Fellowship Trained  
**Riverside Orthopedic Specialists**  
 7560 Hospital Dr., Building B Ste. 101 • 804-693-0529

**KNIGHTS OF COLUMBUS**  
 Fr. Edmond P. McCarthy Council #9428  
 Meetings are at 7:00 p.m. on the first and third Thursday of each month at Church of St. Therese.  
 Visit [www.kofc.org/joinus](http://www.kofc.org/joinus) or email [tbrown127@gmail.com](mailto:tbrown127@gmail.com)

**KEN HOUTZ CHEVROLET**  
 Ella Ames 804-693-2300  
 604 George Washington Memorial Hwy., Gloucester

**AMBROSE DISPOSAL**  
 RESIDENTIAL & COMMERCIAL  
 GARBAGE PICKUP  
 BULK PICKUP  
 DUMPSTER RENTAL  
 1-804-725-7053

**AUTO MAX OF GLOUCESTER**  
 804-695-0660

**OFFICE SUPPLY OF GLOUCESTER, INC.**  
 "Proudly Serving our community for over 35 years."  
 804-693-4155

**Newton Bus Service, Inc.**  
 6838 Belroi Rd., Gloucester  
 804-693-2521 – Local  
 757-874-3160 – Peninsula  
 804-648-2284 – Richmond  
[charterbus.com](http://charterbus.com)

**Olivia's in the village**  
 Owned & Operated by Gary & Karen Ward  
 6897 Main Street • 804-694-0057  
 Open 7 days Breakfast, Lunch & Dinner

**Lockwood's CARPETS** (804) 693-2372  
 Interior Design • Hardwood  
 Ceramic • Carpet • Vinyl  
 7012 George Wash. Mem. Highway, Gloucester  
[www.lockwoodscarpets.com](http://www.lockwoodscarpets.com)

**EPLING'S PEST CONTROL**  
 Don't Let The Bugs ... Bug You!  
 Call 804-642-3775  
 RESIDENTIAL AND COMMERCIAL PEST CONTROL  
 Complete Service for  
 Roaches • Termites • Fleas • Crickets • Spiders • Ants • Bees  
 \*Mention ad for a \$5 discount on your first service\*  
[www.eplingspestcontrol.com](http://www.eplingspestcontrol.com)

**SAL'S SICILIAN PIZZA RESTAURANT**  
 2520 George Washington Mem. Hwy.  
 Pizza, Subs, Sandwiches & Pasta Dinners  
 804-642-6470

**When we provide service for one family member, we're providing care for them all.**



**Hogg FUNERAL HOME & CREMATORY**  
 PO Box 990 • Gloucester Point  
 (804) 642-2136  
 Serving our community since 1870  
 David V Bristow, Licensed Executive Director

At Hogg Funeral Home & Crematory, Rosewell Memorial Garden Cemetery, and our Windsor Gardens Cemetery & Mausoleum in Dutton, our service doesn't stop with the individual who is memorialized; from those with strong ties, to others just getting to know their loved one, our unwavering commitment to superior service and personalized tributes will help see your family through.

As the areas only full-service provider, we handle all the arrangements. Whether its cremation, traditional burial, selecting a marker, mausoleum, or crypt, we are available 24 hours a day, 365 days a year.

Call us today for more details on preparing a personalized ceremony.

**Dream Vacations**  
 Custom Vacations  
 Specializing in Italy & Spiritual Pilgrimages  
 Viking, Norwegian & Many Other Cruise Lines  
**Teresa Hinton Parishioner**  
 804-824-5735

**TO ADVERTISE HERE, CALL DEE PRINTING AT 614-777-8700**

**Andrews Funeral Home & Crematory**  
 Dedicated to Dignified Service  
 PREPLANNED & PREPAID FUNERAL SERVICES  
 CREMATION & OUT OF TOWN SERVICES AVAILABLE  
 GRANITE, BRONZE & MARBLE MEMORIALS  
 804-693-2366  
 Gerald L. Andrews  
 John H. Andrews  
[andrewsfuneralservices.com](http://andrewsfuneralservices.com)  
 7192 Main St., Gloucester

**Witt Electric, Inc.**  
 Certified Electricians  
**Tucker Witt, Owner**  
 Class A Contractor, Licensed & Insured  
 Office: 804-642-2647  
 Cell: 804-695-4400  
 PO Box 828 Gloucester Point, VA

**Louis Serio Jr. and Associates**  
 Certified Public Accountants  
 Financial Consultations  
 804-693-4711  
 6388 Fleming-Rilee Ln., Gloucester

**PLEASE PATRONIZE THE ADVERTISERS WHO MAKE OUR BULLETIN POSSIBLE, AT NO COST TO THE PARISH.**



Please Patronize Our Advertisers... They Make The Bulletin Possible. To Place An Ad, Call 1-800-292-9020.

Therese, VA #19542-AG-9/4/25